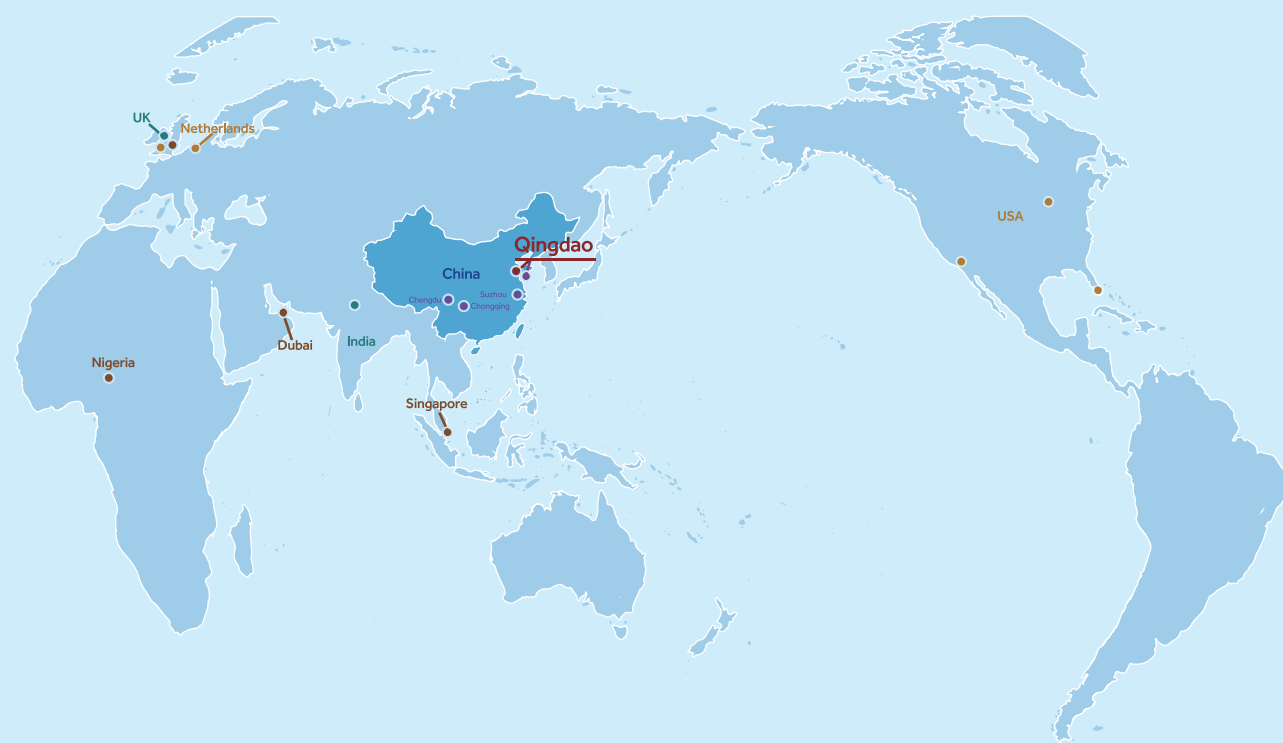


Remote Temperature Monitoring Solutions

RTMD Device: Haier U-COOL

RTMD Device: Haier U-COOL Pro

RTMD Device: Haier U-COOL LoRa



● Headquarter ● Global warehouse ● Training center ● Global subsidiary ● Manufacturing base

Qingdao Haier Biomedical Co.,Ltd.

No.280 Feng Yuan Road, High-tech Zone,
Qingdao, 266109, P.R. China
Tel: +86-0532-88935593
Website: www.haiermedical.com



Haier Biomedical
International



Haier Biomedical
International



@haiermedicalint



Haier Biomedical
International



Haier Biomedical
International

Note: If a slight difference occurs between pictures and actual products, please refer to actual products. Our company reserves the right of final interpretation of this brochure, please contact us for any further information if required.

2023.08



Overview

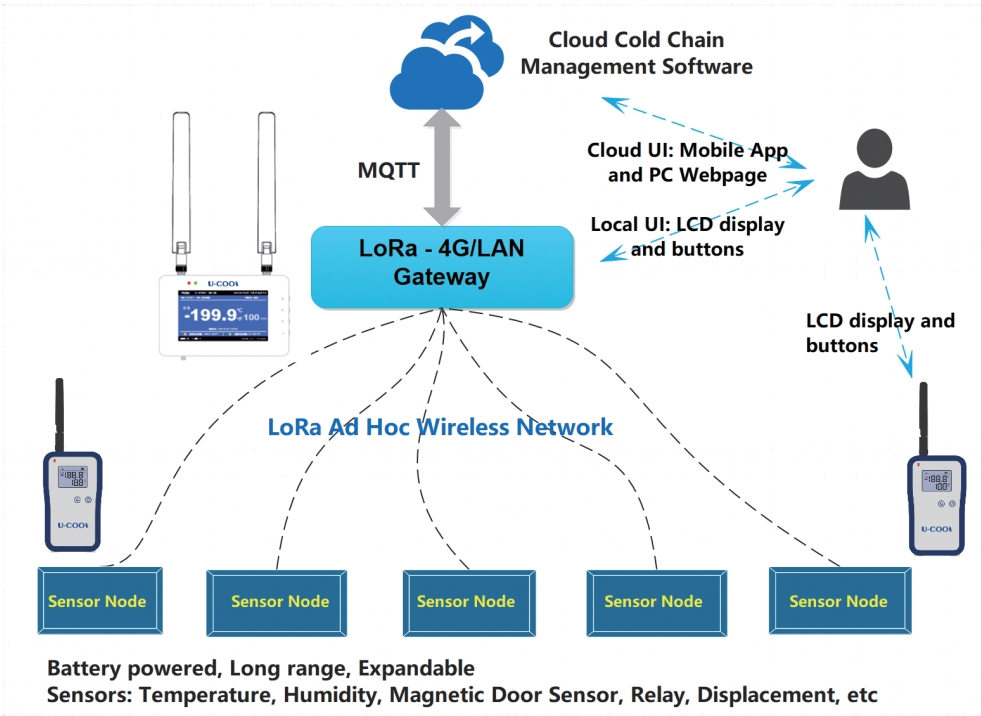
Based on GPRS, 4G, LoRa and other communication technologies, Haier Biomedical provides three RTMD (Remote Temperature Monitoring Device) devices: U-COOL, U-COOL-LoRa and U-COOL Pro, which can meet customers' demand for real-time monitoring of temperature changes of cold chain equipment and facilitate customers to remotely monitor the running status of cold chain equipment through computers, mobile phones and other electronic devices, timely remind customers to deal with the failures such as abnormal temperature, abnormal door opening, power failure of cold chain equipment in the process of operation, and help customers analyze the current status of stored items through a large number of temperature data reports.

Applicable for the monitoring of the stored items in the fridge, cold rooms, refrigerated vehicles, transportcoolers, liquid nitrogen containers in hospitals, in disease control centers, blood stations, laboratories, warehouses, pharmacies and machine rooms.



Fundamental Functions

- Remote monitoring function: Users can remotely monitor data through the Web terminal and APP
- Power failure detection function: the information is uploaded to platform with external power failure detection probe (LORa)
- Door opening and closing detection: the information is uploaded to the platform through 2G/3G/4G network (U-COOL Pro and LoRa)
- Real-time temperature monitoring: the information is uploaded to the platform in real-time through 2G/3G/4G network with the external temperature sensor
- Alarms: Supporting two alarm modes: buzzer and LED flashing
- Remote alarms: supporting SMS, voice and email alarms
- Data export: local storage of 60,000 pieces of exportable data in PDF
- Positioning function: LBS positioning, through 2G/3G/4G network upload monitoring platform



LoRa system schematic diagram



Schematic Diagram of U-COOL and U-COOL Pro

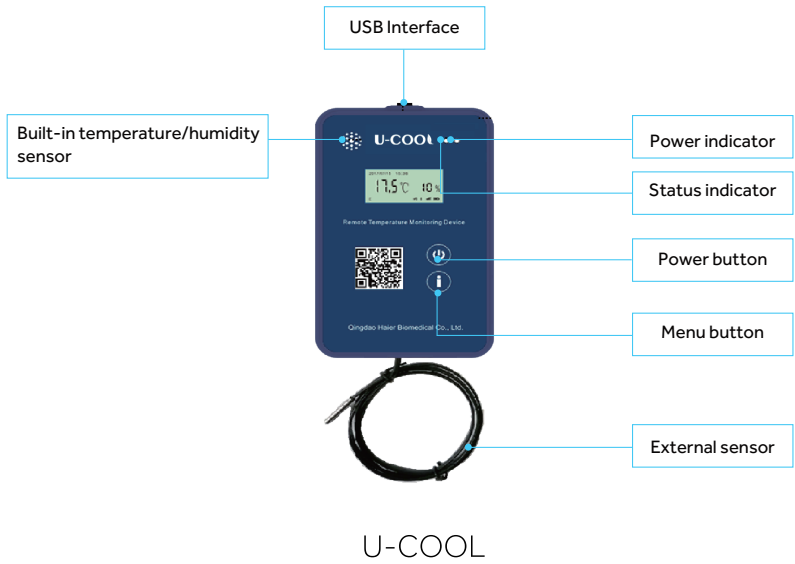


Haier Biomedical Global Equipment Monitoring System

Product Advantages

- One-click installation, automatic networking without manual configuration required
- Remote monitoring function: Users can remotely monitor data through the Web terminal or APP
- Data export: local storage of 60,000 pieces of exportable data in PDF
- Wide temperature monitoring range: -200 °C to 150 °C, supporting various temperature monitoring requirements
- Multi-point collection node support: U-COOL-LoRa supports a maximum of 60 collection loggers
- Applicable for the global market: supporting 180 countries worldwide, supporting SMS, telephone dialing, email alarms
- The server of the monitoring system is located in Europe with low data communication latency and supports 5-year data cloud backup
- The monitoring platform supports regular data report sending function convenient for scientific research institutes and international organizations to carry out long-term data tracking and research
- Remote temperature calibration
- Supporting remote SMS, voice and email alarms
- Multi-point temperature monitoring for U-COOL Pro
- Fully accredited: WHO/PQS, CE(EU), ISO/IEC 27001
- Supporting two alarm modes buzzer and LED flashing
- Level-to-level administration of user privilege of the platform without limited number of the users
- Supporting remote monitoring on multiple platforms including Android, iOS, WEB
- Multi-language available for the monitoring platform: Chinese, English, Spanish, French, Russian, Japanese...

Haier U-COOL



Features

- Used for temperature monitoring of cold chain products such as refrigerators, with the characteristics of small size, real-time temperature monitoring, historical data can be queried, historical data can be exported, abnormal data alarm and so on
- The product has a built-in temperature/ humidity probe and an external temperature probe, which can detect the ambient temperature and humidity and the temperature of the measured device in real time
- Supporting global SMS, telephone dialing and email alarm; Automatically generate equipment operation report to designated personnel
- Supporting network operation in 180 countries around the world
- Support 5-year data backup

Haier U-COOL LoRa

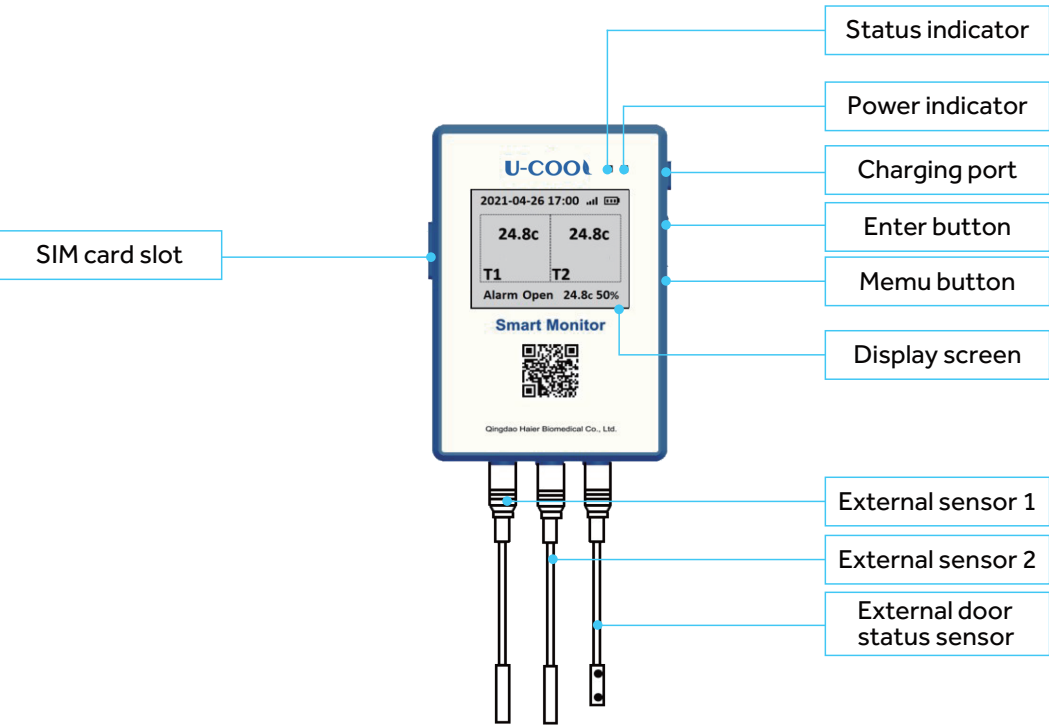


Components: smart gateway + temperature data logger+ door on-off logger+ power outage logger+ LoRa alarm

Features

- Customers can use computers, mobile phones and other electronic devices to remotely monitor the operation status of cold chain products. Timely reminding customers to deal with high/ low temperature, door ajar, power failure and other faults, and helping customers to analyze the current state of stored goods through a large number of temperature data reports
- Supporting global SMS, telephone dialing and email alarm; Automatically generate equipment operation report to designated personnel
- Supporting network operation in 180 countries around the world
- Supporting 5-year data backup

Haier U-COOL Pro



U-COOL Pro

Features

- Remote monitoring of cold chain product running status, timely reminding customers to deal with high/ low temperature, door ajar, power failure and other faults, and helping customers to analyze the current state of stored goods through a large number of temperature data reports
- Multi-probe product, customers can choose common probe & PT100 probe according to the scene, with two temperature probes and one door switch detection probe as standard
- Supporting global SMS, telephone dialing and email alarm; Automatically generate equipment operation report to designated personnel
- Supporting network operation in 180 countries around the world
- Supporting 5-year data backup

Specifications



Model	Haier U-COOL	U-COOL Pro
Temperature sensor	Internal temperature/humidity sensor: 1 External temperature sensor: 1	External temperature sensor: 2 External door status sensor: 1
Measurement items	Ambient temperature/humidity, cold chain equipment temperature	Cold chain equipment temperature, door status
Measurement unit	°C, %RH	°C
External probe	NTC	NTC
	PT100 (optional)	PT100 (optional)
Temperature range	NTC: -40°C~+65°C PT100: -200°C~+150°C	
Accuracy	NTC: ±0.5°C within 0°C to +65°C, ±1°C within -40°C to +0°C PT100: ±0.3°C	
Resolution ratio	0.1°C	0.1°C
Storage capacity	60000 sets	60000 sets
Acquisition frequency	600s (Adjustable)	600s (Adjustable)
Upload frequency	600s (Adjustable)	600s (Adjustable)
Local alarm	sound buzzer alarm and light flashing alarm (Off by default, openable)	
Remote alarm	Support global SMS, telephone dialing and email alarm (user configurable)	
SIM Card	Global roaming card (Standard) / local SIM card (optional)	Global roaming card (Standard) / local SIM card (optional)
Communication net work mode	2G/3G/4G	2G/3G/4G
Ambient temperature	-10°C~+55°C	-10°C~+55°C
Power supply optional solar panel	Built-in rechargeable battery, power adapter DC220V, 50HZ	
Standby time	Support charge and discharge 300 times, single charge standby ≥10 days (Normal signal, acquisition frequency 10min/ time)	Support charge and discharge 300 times, single charge standby ≥10 days (Normal signal, acquisition frequency 10min/ time)
IP	IP66	IP64
Exterior dimension	114.5*71.5*22mm	112mm*75mm*21mm
Shell material	Shell: PA66 plus 30% fiber; Shell sleeve: ABS	shell: PC
Weight	400g	380g
Warranty	3 years	3 years

PLM-6 Solar Panel

Scope of application:

This product is suitable for daily charging of Haier Biomedical RTMD equipment such as Ucool and Ucool pro using solar modules. It is recommended to be used in remote and sunny areas and areas with power shortage.

Product Features:

In order to overcome the situation of long-term power loss, battery damage, inability to charge and equipment failure caused by long-term unmanned management after power failure of equipment in remote areas, solar panels are the best choice.

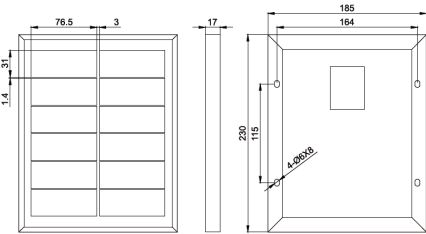
Adopt high-efficiency PERC solar cells

High conversion efficiency、Low decay rate、Low temperature coefficient.

User Friendly Design

With an integrated adjustable bracket, the inclination angle can be adjusted from 0 to 60°, which is suitable for variety of different installation environments.

Product Dimensions



Product pictures



The front view of the component



Back of component



Component expansion

Configuration list

Name	Specification	Unit	Quantity	Remark
Monocrystalline silicon solar photovoltaic panels	6w	piece	1	
Adjustable stand		Set	1	201 stainless steel, with non-slip gasket at the connection
wire	AVVR2*0.3mm2	meter	15	
Nail line card	5mm	One	10	
Bulge	6*30	Set	2	



Model	U-COOL-LoRa: gateway	U-COOL-LoRa: Temperature data logger
Temperature sensor	/	External sensor: 1
Measurement items	/	Temperature
External probe	/	Digital, PT100 (optional)
Temperature range	/	Digital: -40°C~+80°C PT100: -199°C~+199°C
Accuracy	/	0.5°C
Resolution ratio	/	0.1°C
Storage capacity	60000 sets	60000 sets
Acquisition frequency	600s (Adjustable)	600s (Adjustable)
Upload frequency	600s (Adjustable)	600s (Adjustable)
Local alarm	sound buzzer alarm and light flashing alarm	sound buzzer alarm and light flashing alarm (Off by default, openable)
Remote alarm	Support global SMS, telephone dialing and email alarm (user configurable)	/
SIM Card	Global roaming card (Standard) / local SIM card (optional)	/
Communication net work mode	4G/LoRa (Inside the system)	LoRa (Inside the system)
Ambient temperature	-10°C~+55°C	-10°C~+55°C
Power supply	Built-in rechargeable battery, power adapter DC220V, 50HZ	Two non-rechargeable batteries, 3.6V
Standby time	single charge standby ≥48h	3 years (Normal signal, acquisition frequency 10min/ time)
IP	IP50	IP65
Exterior dimension	160*100*33mm	125mm * 73mm * 23mm
Shell material	Aluminum shell +PC panel	ABS
Weight	640g	150g
Warranty	3 years	3 years



Model	U-COOL-LoRa: Door on-off logger	U-COOL-LoRa: Power outage logger
Temperature sensor	External door status sensor: 1	External power outage sensor: 1
Measurement items	Door on-off status	Power
External probe	Door on-off status	Power
Temperature range	On/off	On/off
Accuracy	/	/
Resolution ratio	/	/
Storage capacity	60000 sets	60000 sets
Acquisition frequency	600s (Adjustable)	600s (Adjustable)
Upload frequency	600s (Adjustable)	600s (Adjustable)
Local alarm	sound buzzer alarm and light flashing alarm (Off by default, openable)	
Remote alarm	/	/
SIM Card	/	/
Communication net work mode	LoRa (Inside the system)	LoRa (Inside the system)
Ambient temperature	-10°C~+55°C	-10°C~+55°C
Power supply	Two non-rechargeable batteries, 3.6V	Two non-rechargeable batteries, 3.6V
Standby time	3 years (Normal signal, acquisition frequency 10min/ time)	3 years (Normal signal, acquisition frequency 10min/ time)
IP	IP65	IP65
Exterior dimension	125mm * 73mm * 23mm	125mm * 73mm *23mm
Shell material	ABS	ABS
Weight	150g	150g
Warranty	3 years	3 years

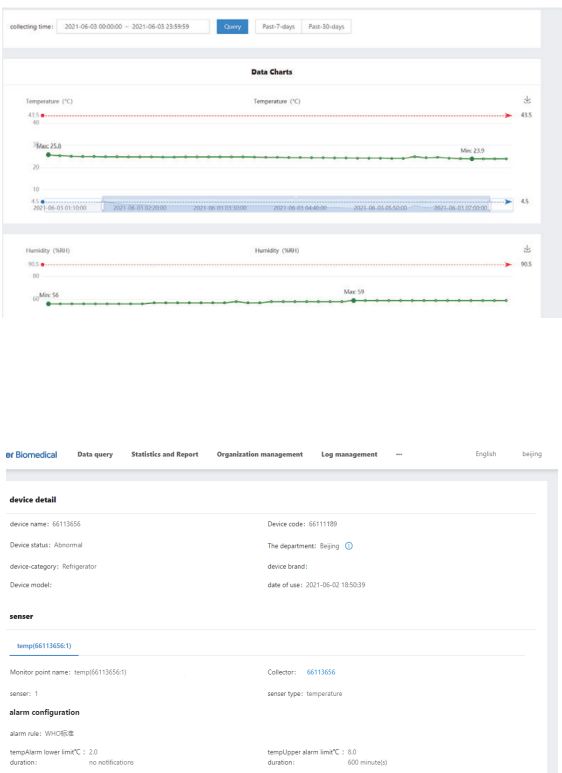
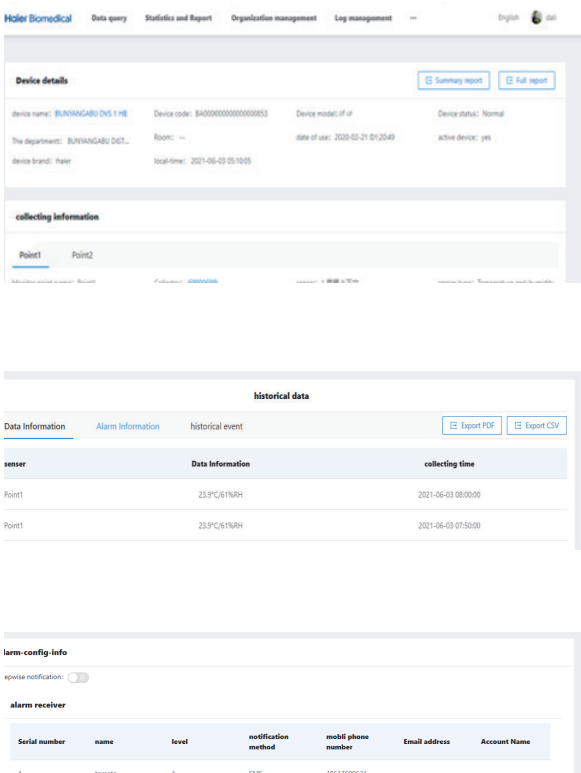


Product	Alarm light	
Model	YB-HC600-04	
Description	Based on LoRa 433Mhz communication	
Installation	Screw fixation, wall mounting	
Communication	LoRa 433Mhz	
Power supply	12V2A, 5.5x2.1 round port power adapter, European standard	
Working current	200mA	
Volume	>105dB	
Lampshade color	Red	
Alarm mode	sound buzzer alarm and light flashing alarm	
Alarm type	Sensor data, power, failure, etc	
Continuous alarm time	>1 hour	
Structure	Shell material	ABS
	External dimensions	200*110*175mm
	Weight	265g
IP	IP54	
Storage and operating conditions	Storage condition: -40°C ~ +70°C, <80% RH Operating condition:-30°C ~ +60°C	

Haier Global Equipment Monitoring System

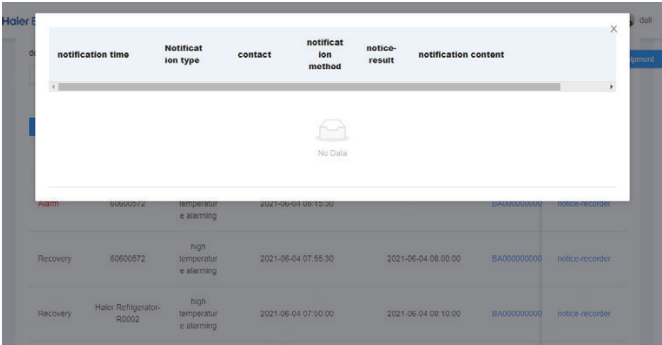
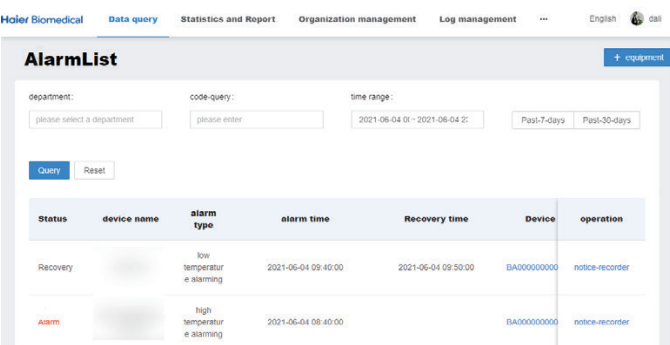
The physical address of the global equipment monitoring system server is located in Europe. Users can remotely log in the system using only the user name and password to view temperature and humidity data, alarm information, location information, device management, and data export. If the temperature exceeds the threshold, the system sends SMS, emails, and phone calls to the management personnel. The system has the characteristics of strong data processing ability, high reliability and fast operation, and users can monitor the cold chain related data in real time.

Equipment Management

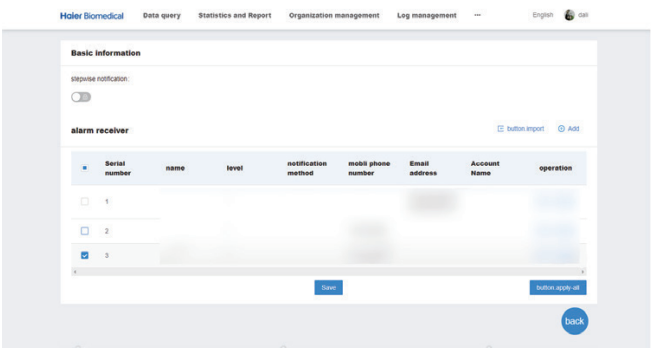
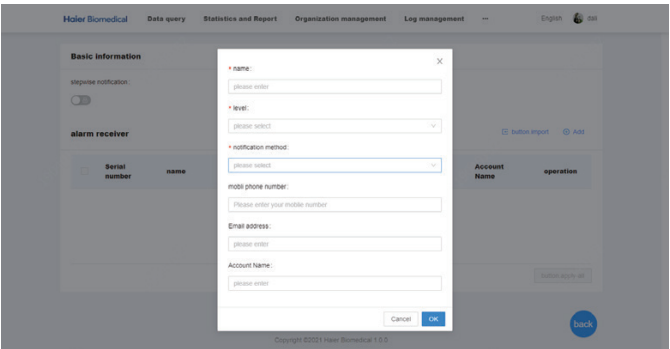


Haier Global Equipment Monitoring System

Alarm query



Alarm receiver configuration



Department and user management

Haier Biomedical Data query Statistics and Report Organization management Log management English SuperCell

Department management

department name: Country:

Please enter the name of department

department name	Country	Time zone	operation
Shandong	China	UTC+08:00	add a Subordinate Department view Delete
Dai	China	UTC+08:00	add a Subordinate Department view Delete
Zhou	China	UTC+08:00	add a Subordinate Department view Delete
Qinghai	China	UTC+08:00	add a Subordinate Department view Delete
Wuling	China	UTC+10:00	add a Subordinate Department view Delete

Copyright ©2021 Haier Biomedical 1.0.0727

Haier Biomedical Data query Statistics and Report Organization management Log management English SuperCell

Create a department

superior department: department name: Department type:

Shandong Please enter the name of department please select

Language: Time zone: Country:

Chinese UTC+08:00 China

longitude and latitude: detail address:

please enter longitude and latitude please enter a detailed address

Copyright ©2021 Haier Biomedical 1.0.0727

department: Account Name: mobile phone number: Email address:

Shandong please enter username please enter your mobile number please enter a email address

Account Name	Nickname	The department	Role	mobile phone number	Email address	Status	operation
laoshan	laoshan	Laoshan	Dep-Admin	18313509523		<input checked="" type="checkbox"/>	reset Password view
linji	linji	Shandong	Dep-Admin			<input checked="" type="checkbox"/>	reset Password view
panchangli	panchangli	Shandong	Dep-Admin			<input checked="" type="checkbox"/>	reset Password view
qingdao	qingdao	Qingdao	Dep-Admin		@ig.com	<input checked="" type="checkbox"/>	reset Password view
SuperCell	SuperCell	Shandong	Dep-Admin			<input checked="" type="checkbox"/>	reset Password view

add user

Account Name: Role: name:

please enter username please select please enter

mobile phone number: Email address: Status:

86 Please enter your mobile number please enter a email address enable

gender:

please select

Reporting function

Haier Biomedical Data query Statistics and Report Organization management Log management English Tomato

Periodic report

department: subscriber information: sent time:

Please select a department please enter please select

device number: 24 Monitor Report: 48

Serial number	Device status	duration	time % (percentage)	alarm number
1	Temperature Normal	21 d 22 h 28 min	100%	0
2	High Temperature Alarm	4 d 14 h 38 min	100%	28
3	Low Temperature Alarm	0 min	100%	0

department	device name	collector name	normal	High-temperature Alarm	Low-temperature Alarm	total number of alarming
UNICOP PAKISTAN	6000039	6000039-Pakist	27%	1.00%	0.00%	1
UNICOP PAKISTAN	6000039	6000039-Pakist	31%	1.00%	0.00%	3
UNICOP PAKISTAN	6000039	6000039-Pakist	100%	0.00%	0.00%	0

sent time	subscriber information	department	report period	report type	operation
2021-05-04 09:00:35	Tomato	Haier Pakistan	Daily Report	Department Report	Download
2021-05-03 09:00:21	Tomato	Haier Pakistan	Daily Report	Department Report	Download
2021-05-02 09:00:16	Tomato	Haier Pakistan	Daily Report	Department Report	Download
2021-05-01 09:00:16	Tomato	Haier Pakistan	Daily Report	Department Report	Download
2021-05-31 09:00:15	Tomato	Haier Pakistan	Daily Report	Department Report	Download
2021-05-30 09:00:15	Tomato	Haier Pakistan	Daily Report	Department Report	Download
2021-05-29 09:00:21	Tomato	Haier Pakistan	Daily Report	Department Report	Download
2021-05-28 09:00:17	Tomato	Haier Pakistan	Daily Report	Department Report	Download
2021-05-27 09:00:19	Tomato	Haier Pakistan	Daily Report	Department Report	Download
2021-05-26 09:00:17	Tomato	Haier Pakistan	Daily Report	Department Report	Download

Haier Biomedical Data query Statistics and Report Organization management Log management English Tomato

subscriber-add

subscriber:

subscriber email:

department:

subscriber information:

report period:

Haier Biomedical Data query Statistics and Report Organization management Log management English Tomato

Subscription report

department: subscriber information: report period:

Please select a department please enter please select

subscriber information	department	report period	report type	operation	subscriber history
weijing	Burkina Faso	Weekly Report	Department report	view Delete	details
zif	Ukraine	Daily Report	Department Report	view Delete	details
Tomato	Pakistan Haier Pakistan	Daily Report	Department Report	view Delete	details

Haier Biomedical Data query Statistics and Report Organization management Log management English Tomato

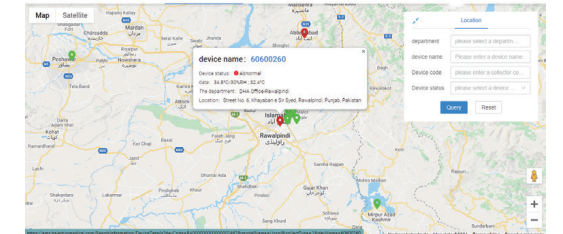
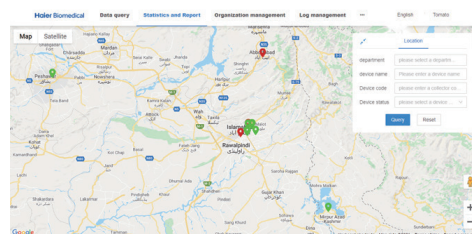
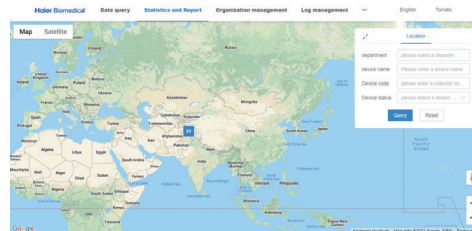
Subscription history

department: subscriber information: sent time:

Please select a department please enter please select

sent time	subscriber information	department	report period	report type	operation
2021-05-04 09:00:35	Tomato	Haier Pakistan	Daily Report	Department Report	Download
2021-05-03 09:00:21	Tomato	Haier Pakistan	Daily Report	Department Report	Download
2021-05-02 09:00:16	Tomato	Haier Pakistan	Daily Report	Department Report	Download
2021-05-01 09:00:16	Tomato	Haier Pakistan	Daily Report	Department Report	Download
2021-05-31 09:00:15	Tomato	Haier Pakistan	Daily Report	Department Report	Download

Map display



Service guarantee

Haier Biomedical has a professional localization service team, can provide on-site installation, on-site training, after-sales service and other services;

The project team is composed of professional technical engineers, providing professional pre-sales remote training and 7*24h after-sales service.