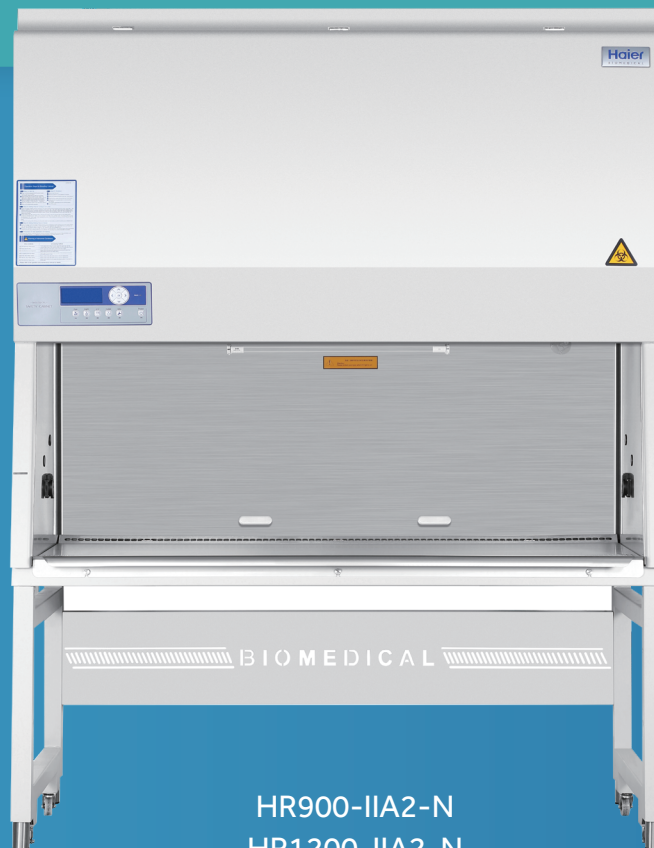


NSF Series Biological Safety Cabinet



HR900-IIA2-N
HR1200-IIA2-N
HR1500-IIA2-N
HR1800-IIA2-N

- Stainless steel inner liner and work surface
- Platform arm rest
- Universal casters, easy to move
- Equipped with dual DC centrifugal fans
- Waterproof socket
- Ultra-low noise, uniform airflow

Haier Biomedical USA

Website: www.haiermedical-usa.com

Haier Biomedical
Intelligent Protection of Life Science



Haier Biomedical
USA



Haier Biomedical
International



@haiermedicalint



Haier Biomedical
International



Haier Biomedical
International

Product Features

Professional air purification equipment suitable for pharmaceuticals, medical and health industries, scientific research laboratories of universities and colleges as well as other related fields.



Equipped with dual DC centrifugal fans, ensure the air flow in the safety cabinet is stable and less noisy. The wind speed is easy to adjust



The ergonomic 10 ° inclination of the cabinet makes the operation more comfortable and the vision clearer



The hot-ball anemometer monitors the wind speed in the working area and exhaust area of the safety cabinet in real time, then compares this with the standard wind speed. The rotating speed of the fan is adjusted through the microprocessor system to maintain the constant wind speed of the safety cabinet



Equipped with an ultra-high efficiency filter to provide air flow with ultra-high cleanliness in the working area, reaching the US standard Fed STD 209E class 1



LCD screen:
Digital display of running status, abnormal operation conditions alarm, filter and UV lamp service life warning function, UV lamp timing function and interlock technology



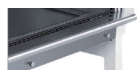
2 Electrical Sockets Waterproof sockets with timing technology allows user to program timed on/off function



Adjustable height stand (optional)



Universal casters with built-in threaded support feet



One-piece arm rest, comfortable to use and relieves fatigue

UV Lamp:
In addition to the standard opening method, reservation opening is added, the sterilization time can be preset according to user needs



Product Advantages



Multiple Voltage Options, Suitable for Many Countries and Regions

Full voltage coverage (100-230V 50/60Hz), suitable for a wide range of countries and regions.



Microprocessor Control System

- Intuitive and informative interactive digital LCD display.
- The hot-ball anemometer monitors the downflow and inflow wind speed of the safety cabinet in real time and compares it with the standard wind speed. The rotating speed of the fan is adjusted through the microprocessor system to maintain the constant wind speed of the safety cabinet.
- Real-time display of operational information and parameters including downflow air velocity, flow rate, temperature, humidity, positive pressure, negative pressure, fan cumulative running time and filter remaining service life.
- One button UV lamp timer function, allows users to set 0 to 24 hours of automatic on/off time.



Ultra-Low Noise, Uniform Airflow

Designed with Dual DC centrifugal fans, combined with an innovative air distribution system, with lower noise, and more uniform air flow.



Superior Filter, Multiple Protection

- ULPA is made of moisture-proof and flame-retardant glass fiber filter paper which can intercept 99.9995% solid particles with a diameter of 0.12 μm to ensure high cleanliness of air supply flow and exhaust flow.
- Perfect air distribution design, no turbulence in the working area.
- Sound and light alarm function for abnormal parameters.



One-piece Welded Cabinet Structure, Leak Proof

Prevention of leakage performance of dangerous factors conforms to NSF specification.

Specifications

Model			HR900-IIA2-N	HR1200-IIA2-N	HR1500-IIA2-N	HR1800-IIA2-N
General Specification	Power Supply(V/Hz)		100-230/50/60	100-230/50/60	100-230/50/60	100-230/50/60
	Power (VA)		1300	1300	1400	1400
	Power of Blower (W)		DC 190W 112W	DC 120W 112W	DC 190W 112W	DC 120W 112W
	Airflow Circulation		70% Downflow, 30% Exhaust	70% Downflow, 30% Exhaust	70% Downflow, 30% Exhaust	70% Downflow, 30% Exhaust
	Main Filter Typical Efficiency		ULPA, U15,99.9995%@0.12um	ULPA, U15,99.9995%@0.12um	ULPA, U15,99.9995%@0.12um	ULPA, U15,99.9995%@0.12um
	Exhaust Filter Typical Efficiency		ULPA, U15,99.9995%@0.12um	ULPA, U15,99.9995%@0.12um	ULPA, U15,99.9995%@0.12um	ULPA, U15,99.9995%@0.12um
	Filter's Brand		AAF	AAF	AAF	AAF
	Downflow Velocity (m/s)		0.35	0.35	0.35	0.35
	Inflow Velocity (m/s)		0.53	0.53	0.53	0.53
	Lighting Intensity (Lux)		946	1323	TBD	1292
	Sound Level (dB(A))		67	64	TBD	67
Dimensions	Net/Gross Weight	kg	225/280	275/335	325/376	375/460
		lbs	496/584	617/750	716.5/804.7	827/1014
	Internal Dimensions (W*D*H)	mm	930*600*650	1230*600*650	1530*600*650	1830*600*650
		in	36.6*23.6*25.6	48.4*23.6*25.6	60.2*23.6*25.6	72.0*23.6*25.6
	External Dimensions (W*D*H) (Width without Armrest)	mm	1040*850(790)*2160	1340*850(790)*2160	1640*850(790)*2160	1940*850(790)*2160
		in	40.9*33.5(31.1)*85	52.8*33.5(31.1)*85	64.6*33.5(31.1)*85	76.4*33.5(31.1)*85
	Packing Dimensions (W*D*H)	mm	1105*935*1720	1435*945*1700	1705*940*1720	2038*945*1700
		in	43.5*36.8*67.7	56.5*37.2*66.9	67.1*37.0*67.7	80.2*37.2*66.9
	Support Stand (mm)		680mm (standard), 680-900mm adjustable height (optional)	680mm (standard), 680-900mm adjustable height (optional)	680mm (standard), 680-900mm adjustable height (optional)	680mm (standard), 680-900mm adjustable height (optional)
	Sash Opening (mm)		200 (Max 460)	200 (Max 460)	200 (Max 460)	200 (Max 460)
Alarms Functions	Container Load (20'/40'/40'H)		12/24/24	8/16/16	6/12/12	6/12/12
	Alarm		Sound and Flash	Sound and Flash	Sound and Flash	Sound and Flash
	Closing Fan Alarm After Door Opening		Y	Y	Y	Y
	Door Ajar		Y	Y	Y	Y
	Abnormal Inflow		Y	Y	Y	Y
	Abnormal Downflow		Y	Y	Y	Y
	Door Open More than Limit		Y	Y	Y	Y
	Filter Clogging		Y	Y	Y	Y
	Filter Damage		Y	Y	Y	Y
	Filter Lifetime Lack		Y	Y	Y	Y
	UV Light Lifetime Lack		Y	Y	Y	Y
Accessories	UV Lamp		Y	Y	Y	Y
	Socket		2 sockets (optional GFCI socket)	2 sockets (optional GFCI socket)	2 sockets (optional GFCI socket)	2 sockets (optional GFCI socket)
	Valve Port		Optional	Optional	Optional	Optional
	Side Wall Service Taps		Optional gas tap, vacuum tap, compressed air tap and water tap	Optional gas tap, vacuum tap, compressed air tap and water tap	Optional gas tap, vacuum tap, compressed air tap and water tap	Optional gas tap, vacuum tap, compressed air tap and water tap
	Antimicrobial Coating		Optional	Optional	Optional	Optional
	316SS Work Surface		Optional	Optional	Optional	Optional
	Work Surface		One-piece	One-piece	One-piece	One-piece
	Touch Screen		Optional	Optional	Optional	Optional
	Motorized Window		N	N	N	N
	Foot Switch		N	N	N	N
	Armrest		Y	Y	Y	Y
	Exhaust Duct Connection Kits		Optional	Optional	Optional	Optional
Others	Certification		UL, NSF	UL, NSF	UL, NSF	UL, NSF

*Haier Biomedical reserves the right to change products and specifications without prior notice.